

# ANNUAL REPORT 2017

PHI SIGMA RHO FOUNDATION



Building the Future Together

[PHISIGMARHOFFOUNDATION.ORG](http://PHISIGMARHOFFOUNDATION.ORG)

# TABLE OF CONTENTS

Letter from the President.....3

About the Foundation.....4

Board of Directors & Volunteers.....5

Goals & Highlights.....6

Grants.....7

Scholarships.....8

Light the Night.....9

Financial Statement.....10

Celebration of Donors.....11&12

Legacy of Giving.....13



# LETTER FROM THE PRESIDENT

Dear Phi Rho Sisters and Friends,

I am pleased to present you with this Annual Report of the Phi Sigma Rho Foundation. As the year closes, it gives us a chance to see just how much more we accomplished than the year before. The pages you are about to read share the amazing milestones we hit in 2017.

We fulfilled our promise to provide the largest convention grant to date of \$10,000 for the National Council. Our commitment to a united philanthropy exceeded previous years, with our national members and friends raising \$34,400 for the Leukemia and Lymphoma Society through the Light the Night Walk. Three outstanding Phi Rhos were awarded with Foundation scholarships, bringing our lifetime total to \$25,000 in awarded funds for education. Additionally, we set out to close the year with our Annual End of Year Campaign to jumpstart 2018. We were pleased when you helped us meet and exceed our goal, bringing in over \$10,000. This annual report allows us to share our accomplishments in the fullest, as well as give you a preview for the year to come.

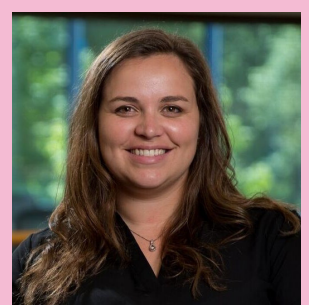
As the Foundation works toward new goals, and puts new challenges into place, it is important to recognize that we could not have achieved the goals of the year without the help of a passionate group of volunteers. I've been blessed with a committed group that want more for this organization just as I do. Their desire to learn more, dig deeper, be better and move forward promise exciting things for 2018.

We continually celebrate the impact made by our outstanding and generous donors. Multiple donors have supported us year after year since our incorporation and we cannot express enough gratitude for their loyalty to the organization. Additionally, the Foundation continues to add new donors that we are happy to share our success with. Individual donors are the breath in the lungs of this Foundation and continue to give us life.

So please, enjoy the pages ahead as we invite you in to a deeper look at our inner workings. Learn more about our scholarship winners and convention events that were held. Discover how to make an impact to Phi Sigma Rho through the Foundation, and join us in thanking those who already do. Share with us your thoughts and critiques, and celebrate with us as we have on some of our biggest wins to date and our successes that are yet to come!

Thank you,

**JANELLE BECKER**  
PRESIDENT, PHI SIGMA RHO FOUNDATION





## ABOUT THE FOUNDATION

Founded in 2005, the Phi Sigma Rho Foundation exists to fund programs that provide professional, educational, philanthropic, and leadership development opportunities for the members and friends of Phi Sigma Rho Sorority. Prior to the formation of the Foundation, the financial burden of the Sorority was borne largely by the active sorority members. As the Sorority continued to grow, it was noted that our active and alumnae members need more support. It was this realization that sparked Phi Sigma Rho sisters to set up a foundation.

### **Mission**

The Phi Sigma Rho Foundation exists to promote social responsibility, personal integrity, and lifelong enrichment by providing professional, educational, philanthropic, and leadership development opportunities for the members and friends of Phi Sigma Rho Sorority.

### **Vision**

The advancement of Phi Sigma Rho Sorority and the community through the encouragement of selfless giving.

## BOARD OF DIRECTORS

Christine Jackson, Janelle Becker  
**President**

Amara Bojrab, Daisy Gill  
**VP of Development**

Dominique Fantasia  
**VP of Programming**

Ashley Mohler  
**VP of Publicity**

Rebecca Schmidt  
**VP of Strategy**

Kathryn Shrock, Samantha Rohner  
**VP of Donor Engagement**

Rosalie Krob  
**Treasurer**

Lexi Heironimus  
**Secretary**

Mary McWilliams  
**Ex-Officio**

"The Foundation is doing great work in supporting sisters through scholarships. Every dollar donated helps another sister with school or her development."

—Hillary Emer Taggart,  
Omicron Chapter



## VOLUNTEERS

Christine Jackson  
*Assistant Treasurer*

Kendall Murphy  
*Collegiate Affairs*

Bridget Fricke  
*HR Manager*

Charlene Yauch  
*Investment Chair*

Devin Stanke  
*Philanthropy Chair*

Blair Pellat  
*Publicity Chair*

Victoria Platt  
*Scholarship Chair*

Kat Wenger  
*Webmaster*

Katie Shesko  
*Scholarship Committee*

Julie Hayden  
*Scholarship Committee*

Beth Holloway  
*Scholarship Committee*

Kathy Bradley  
*Investment Committee*

Lara Day  
*Investment Committee*

Alexandria Caliguire  
*Scholarship Committee &  
Investment Committee*

# GOALS & HIGHLIGHTS

## 2017 Highlights

This year the Foundation awarded three **\$1,000** scholarships to exceptional sisters, granted **\$10,000** to the Sorority to fund the LEAP (Leadership, Education, and Programming) sessions at National Convention in St. Louis, and joined the philanthropic efforts of chapters together, raising a total of **\$34,440** for the Leukemia and Lymphoma Society through *Light the Night* walks and other fundraising events.

## 2018 Goals

Our focus for 2018 will continue to be on expanding our donor base to include younger alumnae and sisters rekindling their relationship with the Phi Sigma Rho, while streamlining our processes as we continue to grow. We will also continue providing support for leadership and education programming at Conference. Along with these objectives, we will maintain coordination of chapters and alumnae associations in philanthropy efforts, supporting leukemia and lymphoma education and awareness.



"I have seen so many active and alumnae sisters benefit from the LEAP programming at Convention and Conference. ... By donating, you can help other sisters develop into amazing leaders and engineers."

*-Mary Beth White,  
Sigma Chapter*

# GRANTS

The Foundation provides educational grants to Phi Sigma Rho through a formal grants process. The Sorority uses these grants to support LEAP sessions at National Convention and Leadership Conference.

In 2017, the Foundation approved a grant of **\$10,000** for National Convention in St. Louis, MO. This grant helped to fund sessions including Critical Thinking and Problem Solving, Phi Rho Your Boat, Finances, and Lean In Circles. Sessions are structured to form a pyramid, being designated as a base, building block, or top. Over the course of a Convention or Conference, sisters can become LEAP certified by attending at least one session from each category, effectively constructing their LEAP pyramid. During Convention 2017, **85** sisters were LEAP certified.

All scholarships and grants provided by the Foundation are **100%** supported by the generous contributions of our donors. To this point, we have provided a total of **\$45,093** in grants to the Sorority, providing support for the personal and professional growth of Phi Rho sisters and friends. Though much of the cost for National Conventions and Leadership Conferences are eligible for Foundation grants, at times the full amount may not be granted due to limited funds. With the help of our generous donors, we hope to increase future grant awards to fully cover the Sorority's leadership development and educational programs.

"The programming sessions I have participated in were wonderful opportunities to connect with sisters from incredibly diverse backgrounds and learn from their experiences. The Foundation does a great job putting together activities that are relevant to both active and alumni sisters – you always leave feeling motivated and ready to take on new challenges."

*–Katherine Hoppert,  
Epsilon Chapter*

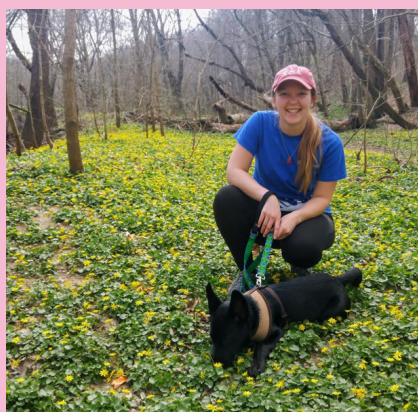


# SCHOLARSHIPS

This year the Foundation awarded three **\$1,000** scholarships to exceptional sisters at Convention. To date, the Foundation has awarded **\$25,000** in scholarships to **34** sisters. These funds are used toward tuition and fees associated with an accredited degree program.

## Merit

The Merit Scholarship is given to a sister who has excelled academically, while demonstrating exceptional acts of community service, leadership, volunteerism, and meaningful participation in Phi Sigma Rho and/or other activities.



"With the support of my sisters I have successfully become the first member of my family to graduate college. As I pursue my Master's degree in Chemical Engineering at the University of Louisville, I am extremely grateful to have this scholarship to help pay for tuition and program fees."

**-Meredith Jones**  
*Alpha Gamma Chapter*

## Sarah Rogers McClure Memorial

The Memorial Scholarship is given to a sister who always puts others first and takes action because it is the right thing to do, not for attention or personal gains. The ideal recipient will be active in Phi Sigma Rho, as well as participating in community service or other meaningful activities.



"Receiving this scholarship means so much to me not only in being honored as sister, but it will aid me in continuing my academic endeavors. As a bioengineer at the University of Toledo, my program is 5 years, but my scholarship from the UT only extends four years. This scholarship will help me in my final year, where after I am pursuing a career in medical devices in order to help others."

**-Miranda Vargas**  
*Delta Chapter*

## Leadership

The Leadership Scholarship is given to a sister who is a leader in her chapter and community, demonstrated by exceptional acts of community service, volunteerism, and meaningful participation in Phi Sigma Rho and other activities.



"...I have had the honor of being a part of a multitude of student organizations, clubs, bands, and extracurricular activities. I can say with certainty though that none of them have had a greater impact on me than Phi Sigma Rho. I will be using these funds as I enter my senior year to further my degree in Applied Engineering Sciences with a minor in Computer Science."

**-Madison Farrell**  
*Alpha Delta Chapter*

## 2017 Scholarship Winners



# LIGHT THE NIGHT

Since 2010, leukemia and lymphoma education has been one of the major national philanthropies of Phi Sigma Rho. Having sisters and family members who experienced blood cancers first hand, Phi Sigma Rho wanted to have a part in helping find a cure. To further unite the chapters in their philanthropic efforts, the Phi Sigma Rho Foundation launched the *Light the Night* campaign with The Leukemia and Lymphoma Society's Light the Night Walk in 2015. With this campaign, active chapters and alumnae associations can easily find and organize walks or create their own event to benefit the Leukemia & Lymphoma Society.

Going into the third year of the campaign for the Leukemia & Lymphoma Society, the Foundation decided to increase the philanthropic goal to **\$25,000** based on last year's success. The chapters and groups participating did not disappoint in showing overwhelming support, allowing us to crush the goal again this year! The 2017 Light the Night Campaign goal was not only met, but the teams participating raised **\$34,440** for the Leukemia & Lymphoma Society! This has raised our grand total to over **\$78,000** donated over the past three years.

## Top Teams

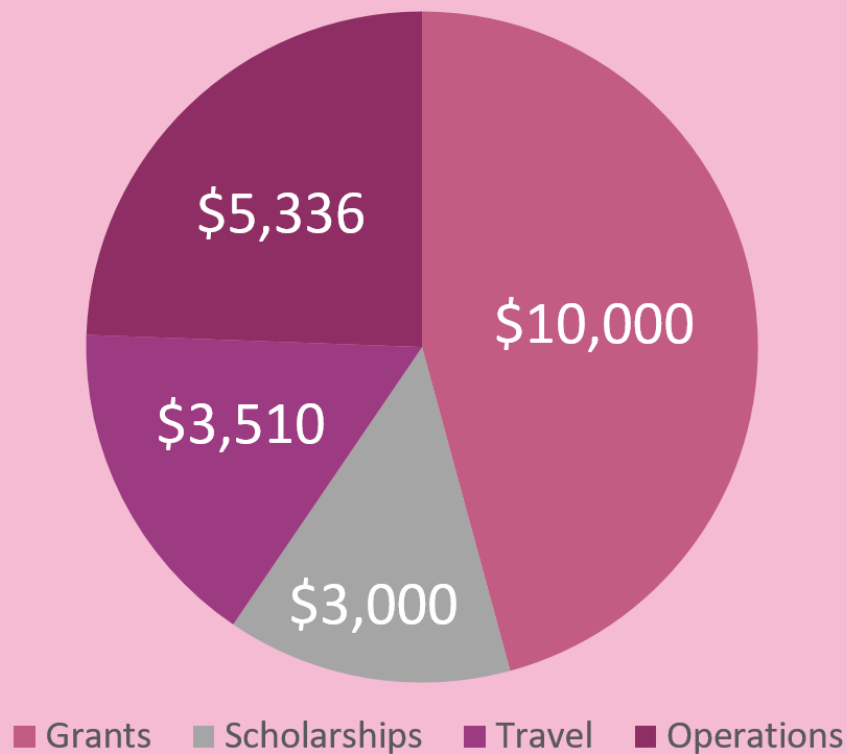
UC Berkeley Alpha Theta -- Arizona State Alpha Lambda -- Wright State Alpha Zeta

## Top Individuals

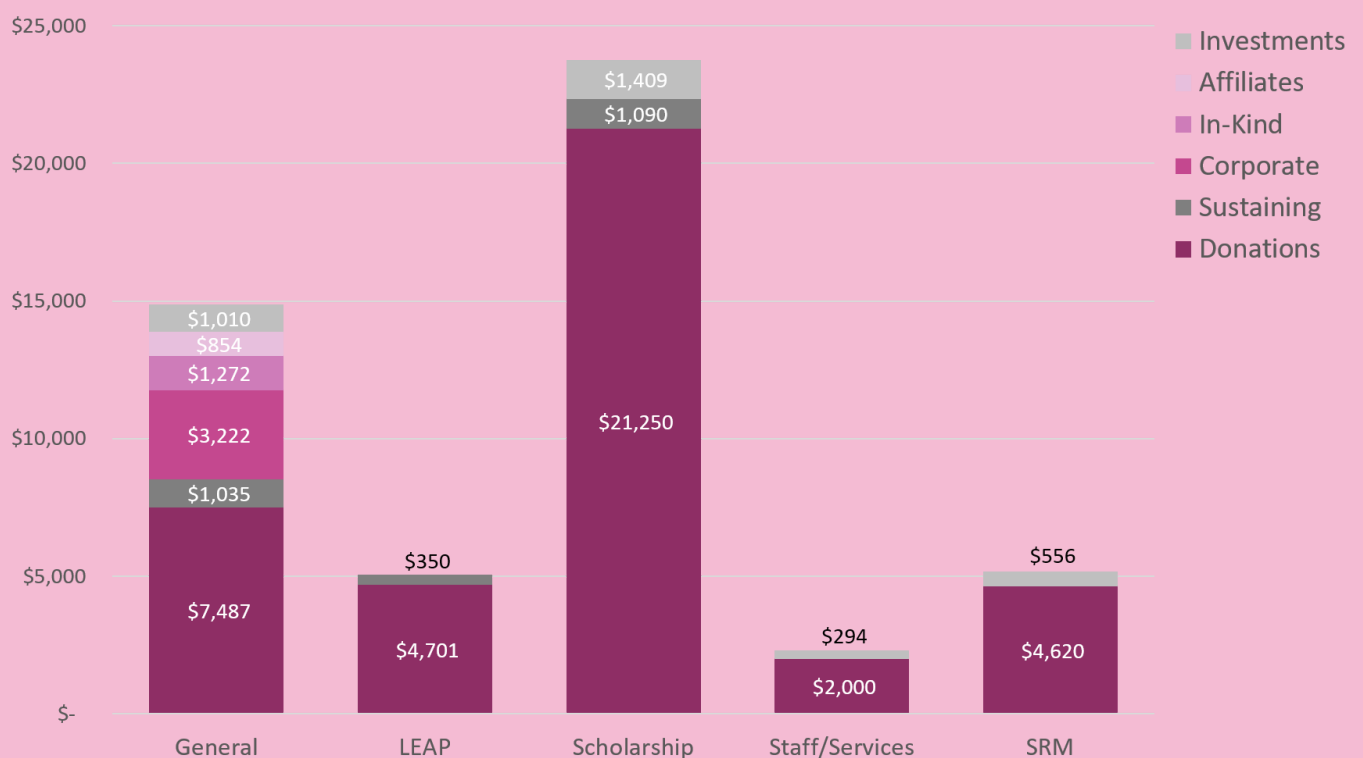
Emma Manzano -- Alyssa Goldstein -- Ann Marie Lang

# FINANCIAL STATEMENT

## Expenses - \$21,846



## Income - \$51,150



SRM refers to the Sarah Rogers McClure Scholarship Fund

# CELEBRATION OF DONORS

## Annual Donor Levels

### Star Club

Lewis and Carol McDonald Family

### Loyalty Club

Jennifer Roach

### 1984 Club

Elana Chapman, Enterprise Holdings Foundation

### Rising Sun Club

Charlene Yauch, The Rogers Family, Christine Jackson, Heather Lazar, The Benevity Community Impact Fund, Exelon Corp

### Pearl Club

Katherine Hoppert, Teresa Phillips, Brittany Potter, Alexandria Caliguire, Dominique Fantasia, Rosalie Krob, Phi Sigma Rho

### Pyramid Club

Allison Lenhoff, Janet Reyna, Nicolette Yovanof, Kat Wenger Janelle Becker, Kathryn Shrock, Lisa Canterbury, Mary Beth White, Renee Rigrish, United Way of Lancaster County

### Key Club

Hillary Emer Taggart, Erika Bustos, Abby Schwartz, Marcie Aydelotte, Rebecca Riley, Alexandra Heironimus, Amanda Keeney, Burns and McDonnell Foundation, Elishka Jepson, GE United Way, Helen Lu, Joseph Mohler, Katherine Cook, Kathy Bradley, Melissa Moran, Miranda Vargas, Rashmi Drummond, Shannon Vondrak, Sharon Waxmonsky, Vandalia Rental

### Sigmand Club

Anheuser Busch, Ann Roach, Ashley Mohler, Becky Dobbs, Daisy Gill, Gina Caliguire, Grace Northcutt, Haley Moeder, Jenna Daghestani, Jordan Bair, Lacey Chavez, Mary McWilliams, Michelle Self, Minna Krejci, Sarah Brandeau, Sarah Teresa

Star Club  
\$10,000

Prosperity Club  
\$5,000

Loyalty Club  
\$2,500

1984 Club  
\$1,984

Rising Sun Club  
\$1,000

Pearl Club  
\$500

Pyramid Club  
\$250

Key Club  
\$100

Sigmand Club  
\$50

# CELEBRATION OF DONORS

## Influencer Society

Lewis and Carol McDonald Family

## Visionary Society

Elana Chapman, Charlene Yauch, Jennifer Roach

## Scholarship Society

Heather Lazar, Lara Day, Christine Jackson, The Rogers Family

## Friendship Society

Hillary Emer Taggart, The Benevity Community Impact Fund,  
Katherine Hoppert, Teresa Phillips, Allison Lenhoff, Janet Reyna,  
Nicolette Yovanof, Leanne Price

## Encouragement Society

Brittany Potter, Erika Bustos, Enterprise Holdings Foundation,  
Exelon Corp, Alexandria Caliguire, Kat Wenger, Abby Schwartz,  
Amanda Brown, Amy Mazzanti, Katherine Shesko, Margaret Allen,  
Mona Kim, Rachel Chicchi, Rebecca Trudeau, Sarah Fisk

## Circle of Contribution

*Donors become part of the Circle of Contribution after maintaining an annual giving level for 5 consecutive years. Stars indicate the number of times the donor has completed the circle.*

Erika Bustos\*

Hillary Emer Taggart\*

Jennifer Roach\*

Marcie Aydelotte\*

Rebecca Riley\*

Brittany Potter\*

The Rogers Family\*

Charlene Yauch\*\*

Christine Jackson\*

Elana Chapman\*

## Lifetime Donor Levels

Order of the Orchid  
\$1,000,000

Platinum Society  
\$500,000

Silver Society  
\$250,000

Founders Society  
\$100,000

Changemaker  
Society  
\$50,000

Influencer Society  
\$25,000

Visionary Society  
\$10,000

Scholarship Society  
\$5,000

Friendship Society  
\$2,500

Encouragement  
Society  
\$1,000

# LEGACY OF GIVING

Our programs would not be possible without the generous support and service of our volunteers and donors. Volunteering for or donating to the Foundation supports professional, educational, philanthropic, and leadership development opportunities for the sisters and friends of Phi Sigma Rho Sorority. Everyone has different strengths so any contribution makes a difference towards the betterment of hundreds of aspiring women! Make a difference today with these many ways of giving back to the Foundation.

## Volunteer Your Time

Volunteering will not only better yourself but also help the Foundation. We have a lot of volunteer opportunities available, or you are always welcome to send us your ideas. Be the change you want to see.

## Make a Cash Donation

No matter the amount, your gift to the Foundation will help us continue sponsoring and developing the future of women in STEM fields. We are a 501(c)3 charitable organization, so donations are tax-deductible! Send us your gift today via our website or send a check to Phi Sigma Rho Foundation, P.O. Box 7021, Westchester, IL 60154.

## Make a Stock Donation

Donating shares of stocks and mutual funds has double tax benefits – on the current market value of the donation and on the unrealized capital gain of the shares. Remember, this only applies to shares that you have owned for more than a year. Contact us for more information, or call Waukesha Investments at (262) 549-8596 to get started.

## Make a Corporate Donation

Many companies encourage their employees to donate by matching the donation, sometimes dollar-for-dollar or even more. Check with your company's HR to see if they offer such programs to maximize your contribution. We also offer corporate recognition if your company wishes to make a donation or sponsor a program.

## Support Us through Affiliate Links

We are registered with AmazonSmile, GoodSearch, and GoodShop. Register an account with them, and designate the Phi Sigma Rho Foundation as your charity. We also work with DietBet and StepBet as fundraisers, so keep an eye out for upcoming games!

## Set Up a Recurring Donation

What does \$10 per month mean to you? How about \$50? The Phi Sigma Rho Foundation makes it easy to set up recurring donations from your bank account with your authorization. These small donations add up to big benefits for the Foundation in achieving its goals. Visit our website for more information or to set up your donation today!